

POTENTIAL MITIGATION MEASURES
CONSTRUCTION PHASE:

- CM1 (L+V) - WORKS AREA MINIMISED
- CM2 (V) - CONSTRUCTION PERIOD REDUCED TO PRACTICAL MINIMUM
- CM3 (V) - PHASING OF THE CONSTRUCTION STAGE
- CM4 (V) - CONSTRUCTION TRAFFIC (LAND AND SEA) REDUCED TO PRACTICAL MINIMUM
- CM5 (V) - ERECTION OF DECORATIVE MESH SCREENS OR CONSTRUCTION HOARDINGS
- CM6 (V) - AVOIDANCE OF EXCESSIVE HEIGHT AND BULK OF SITE BUILDINGS AND STRUCTURES
- CM7 (V) - CONTROL OF NIGHT-TIME LIGHTING
- CM8 (L) - PROTECT EXISTING TREES
- CM9 (L) - TREES AFFECTED BY THE WORKS SHALL BE TRANSPLANTED
- CM10 (L+V) - ADVANCED HYDROSEEDING AROUND TAXIWAYS AND RUNWAYS

POTENTIAL MITIGATION MEASURES
OPERATIONAL PHASE:

- OM1 (V) - SENSITIVE LANDSCAPE DESIGN OF RECLAMATION EDGE
- OM2 (V) - ALL ABOVE GROUND STRUCTURES SHALL BE SENSITIVELY DESIGNED
- OM3 (V) - SENSITIVE DESIGN OF BUILDINGS AND STRUCTURES IN TERMS OF SCALE, HEIGHT AND BULK (VISUAL WEIGHT)
- OM4 (V) - USE APPROPRIATE BUILDING MATERIALS AND COLOURS IN BUILT STRUCTURES
- OM5 (V) - LIGHTING UNITS TO BE DIRECTIONAL AND MINIMISE UNNECESSARY LIGHT SPILL AND GLARE
- OM6 (L+V) - GREENING MEASURES IMPLEMENTED
- OM7 (L+V) - COMPENSATORY TREE PLANTING FOR ALL FELLED TREES
- OM8 (L+V) - STREETSCAPE SHALL BE SENSITIVELY DESIGNED
- OM9 (L+V) - ALL STREETSCAPE AREAS AND HARD AND SOFT LANDSCAPE AREAS DISTURBED DURING CONSTRUCTION SHALL BE REINSTATED
- OM10 (V) - AESTHETIC IMPROVEMENT PLANTING OF VIADUCT STRUCTURE THROUGH GREENING OF STRUCTURE WHERE FEASIBLE
- OM11 (V) - SENSITIVE DESIGN OF FOOTBRIDGES, NOISE BARRIERS AND ENCLOSURES WITH GREENING (SCREEN PLANTING/CLIMBERS/PLANTERS) AND CHROMATIC MEASURES

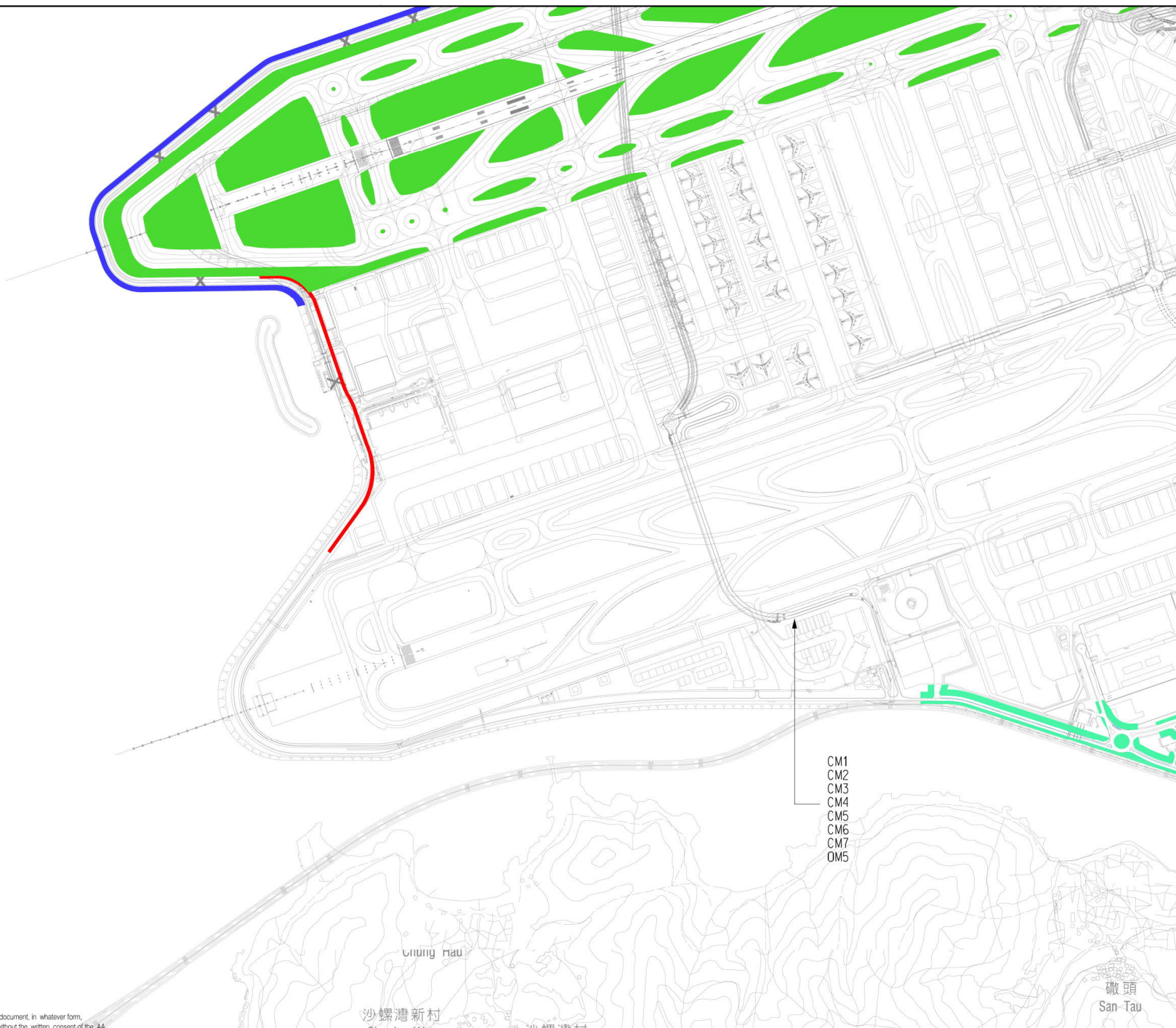
LEGEND:

- CM10, OM6
- OM2, OM3, OM4, OM6
- OM6, OM8, OM9
- OM6, OM10
- OM1, OM6



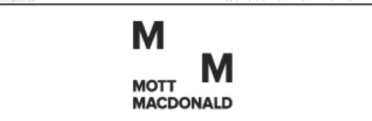
NOTE:
COLOURED MITIGATION MEASURES ARE LOCATION SPECIFIC NON-COLOURED MITIGATION MEASURES CAN BE APPLIED THROUGHOUT THE PROJECT SITE BOUNDARY
L = LANDSCAPE MITIGATION MEASURE
V = VISUAL MITIGATION MEASURE

Copyright in this document and all proprietary rights in the information it contains belong to the AA. It is a condition of the supply of this document, in whatever form, that the recipient shall hold it in confidence and shall not duplicate or otherwise reproduce it in whole or in part, nor disclose its contents without the written consent of the AA.



CM1
CM2
CM3
CM4
CM5
CM6
CM7
OM5

Rev.	Date	Description	Checked
A	02DEC15	FIRST ISSUE	AD
B	06FEB17	SECOND ISSUE	AD



Title
LANDSCAPE AND VISUAL MITIGATION ARRANGEMENT BLOW-UP PLAN – CHEK LAP KOK

Consultant's Signatures for Approval		Date
Design	PL	06FEB17
Checkers	TL / TK	06FEB17
Approver	AD	06FEB17

EXPANSION OF HONG KONG INTERNATIONAL AIRPORT INTO A THREE-RUNWAY SYSTEM	
Drawing No.	MCL / P132 / EMA / 12-001.5
Scale at A3	12500
Rev.	B